

CYNGOR SIR POWYS COUNTY COUNCIL.

**Strategic Overview Board
20th September 2016**

**REPORT AUTHOR: County Councillor Wynne Jones
Portfolio Holder for Performance**

SUBJECT: LGDU Local Government Performance Bulletin 201516

REPORT FOR: Information

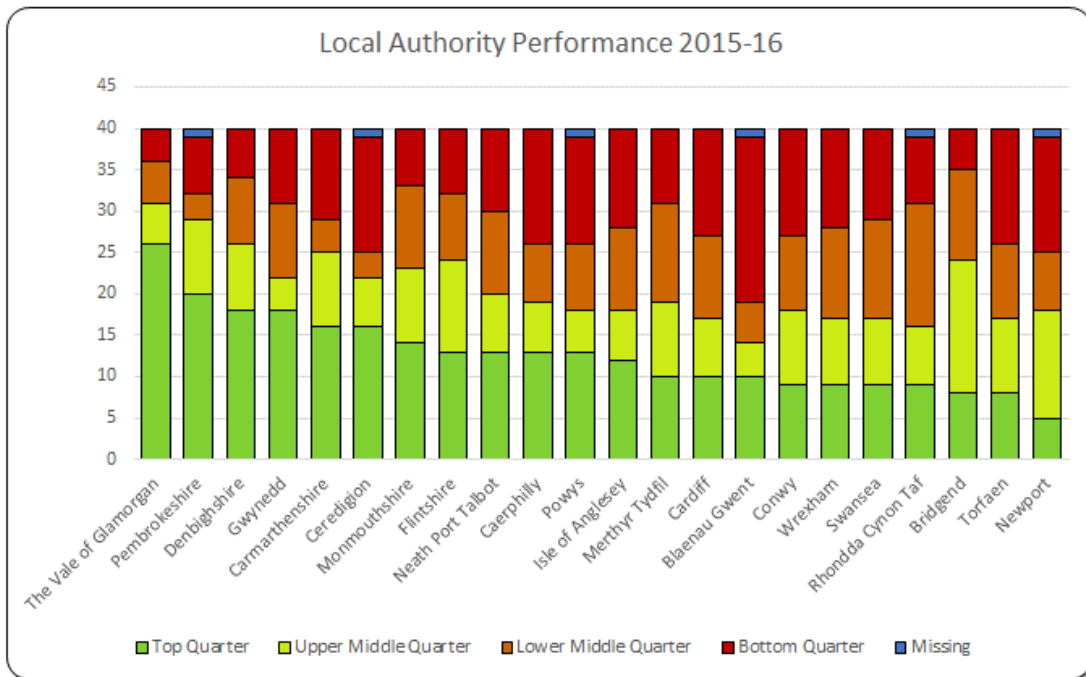
1. Summary

1.1 The 11th Local Government Performance Bulletin was published on 7th September 2016, covering the period 2015/16. The bulletin is based on a national set of 46 indicators. Overall performance in Wales is summarised as follows:

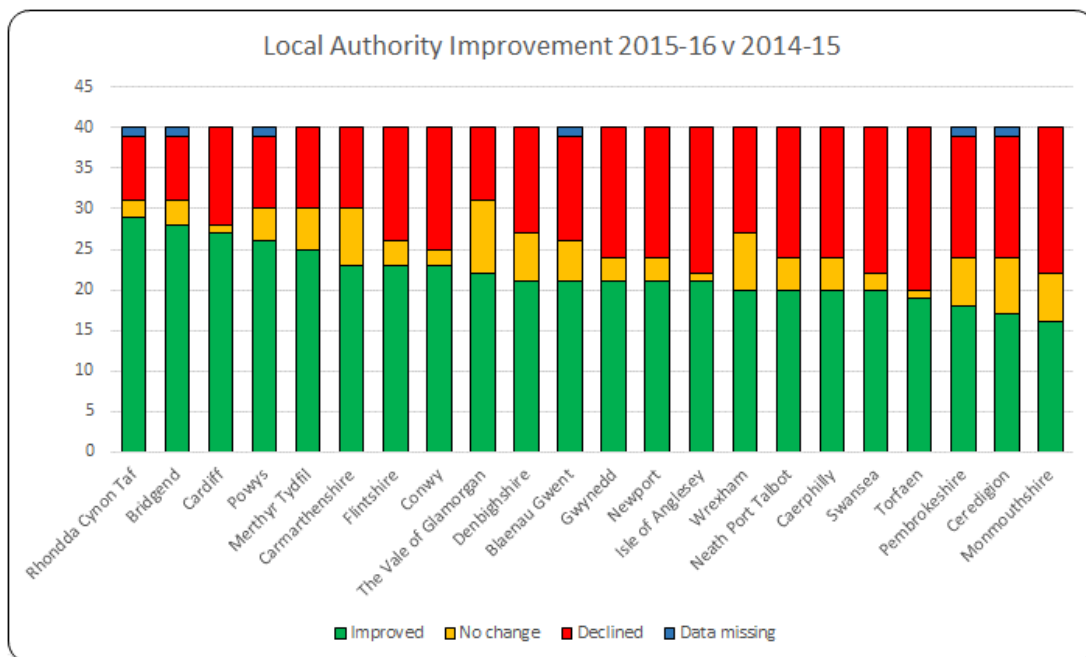
- At a Wales level, 65% (26) of the 40 indicators which are comparable between 2014-15 and 2015-16 show improvement.
- The gap in performance (between the best and worst performing authorities) narrowed in 59% (23) of the indicators.
- For 41% (16) of the indicators, performance improved and the gap between the best and worst performing authorities narrowed.

1.2 Powys performance in relation to all wales;

- Powys were ranked 11th out of 22 Authorities in relation to the ranking given based on their quartile positions for the above indicators;



- It is important to note that in relation to improvement year on year Powys were the 4th best authority in Wales where measures had shown improvement from 2014-15 to 2015-16.



1.3 The bulletin is based on the full set of 46 indicators although only 24 are specifically mentioned in the document. The following table details the full set of indicators and is lifted from the draft Annual Performance Report 2015/16 currently in development;

Measure	NSI/ PAM	2013/14 Actual	2014/15 Actual	2015/16 Target	2015/16 Actual	Trend between 2014/15 to 2015/16	Welsh Average	All Wales Rank and quartile
Adults – Social Care						5 Improved 0 Stayed the same 1 declined		0 Upper 2 Upper middle 1 Lower Middle 3 Lower
(SCA/18a) The percentage of carers of adults who were offered an assessment or review of their needs in their own right during the year	PAM	87.4	79.7	93	86.9	↑	91.4	17th Lower
(SCA/007) The percentage of clients with a care plan at 31 March whose care plans should have been reviewed that were reviewed during the year	PAM	67.2	73.6	80	85.6	↑	83	10th Upper Middle
(SCA/019) The percentage of adult protection referrals completed where the risk has been managed	NSI & PAM	93.5	92.66	90	92.41	↓	97	21st Lower
(SCA 002a) The rate of older people (aged 65 or over) supported in the community per 1,000	NSI	71.16	67.24	67.5	67.5	↑	64.12	7th Upper Middle
(SCA/001) The rate of delayed transfers of care for social care reasons per 1,000 population aged 75 or over	NSI	9.17	14.84	5.5	10.77	↑	4.87	21st Lower
(SCA002b) The rate of older people (aged 65 or over) whom the authority supports in care homes per 1,000 population aged 65 or over at 31 March	NSI	20.95	19.62	19.5	18.92	↑	18.02	14th Lower Middle
Children – Social Care						7 Improved 1 Stayed the same 2 declined		4 Upper 3 Upper middle 1 Lower Middle 2 Lower

Measure	NSI/ PAM	2013/14 Actual	2014/15 Actual	2015/16 Target	2015/16 Actual	Trend between 2014/15 to 2015/16	Welsh Average	All Wales Rank and quartile
(SCC/045) The percentage of reviews of looked after children, children on the Child Protection Register and children in need carried out in line with the statutory timetable	PAM	84.5	78.9	92	83.3	↑	90.3	20th Lower
(SCC/025) Percentage of statutory visits to looked after children due in the year that took place in accordance with regulations	PAM	94.6	94.8	95	91.1	↓	88.1	9th Upper Middle
(SCC/004) The percentage of children looked after on 31 March who have had three or more placements during the year	NSI & PAM	4.0	8.8	6	8.8	⇒	9.8	8th Upper Middle
(SCC/033d) The percentage of young people formerly looked after with whom the authority is in contact at the age of 19	NSI	100.0	92.9	100	100.0	↑	93.2	1st Upper
(SCC/033e) The percentage of young people formerly looked after with whom the authority is in contact, who are known to be in suitable, non-emergency accommodation at the age of 19	NSI	100.0	92.3	90	100.0	↑	93.5	1st Upper
(SCC/033f) The percentage of young people formerly looked after with whom the authority is in contact, who are known to be engaged in education, training or employment at the age of 19	NSI	64.3	76.9	80	83.3	↑	60.7	3rd Upper
(SCC/041a) The percentage of eligible, relevant and former relevant children that have pathway plans as required	NSI	98.8	97.6	95	98.6	↑	93.5	13th Lower Middle

Measure	NSI/ PAM	2013/14 Actual	2014/15 Actual	2015/16 Target	2015/16 Actual	Trend between 2014/15 to 2015/16	Welsh Average	All Wales Rank and quartile
(SCC/037) The average external qualifications point score for 16 year old looked after children in any local authority maintained learning setting	NSI	290	277	230	284	↑	269	8th Upper Middle
(SCC/011b) The percentage of initial assessments that were completed during the year where there is evidence that the child has been seen alone by the Social Worker	NSI	57.0	56.0	55	61.1	↑	49.5	5th Upper
(SCC/002) The percentage of children looked after at 31 March who have experienced one or more changes of school, during a period or periods of being looked after, which were not due to transitional arrangements, in the 12 months to 31 March	NSI	17.6	13.3	15	16.4	↓	11.9	17th Lower
Housing / Homelessness / Planning						1 Improved 0 Stayed the same 2 declined		1 Upper 0 Upper middle 0 Lower Middle 2 Lower
(PSR/002) The average number of calendar days taken to deliver a Disabled Facilities Grant	NSI & PAM	268	170	180	152	↑	241	2nd Upper
(PSR/004) The percentage of private sector dwellings that had been vacant for more than 6 months at 1 April that were returned to occupation during the year through direct action by the local authority	NSI	6.72	1.83	-	1.58	↓	11.08	22nd Lower
(PLA/006) The number of additional affordable housing units provided during the year as a percentage of all additional housing units provided during the year	NSI & PAM	38	53	-	21	↓	36	19th Lower
Leisure / Libraries						1 Improved 0 Stayed the		1 Upper 0 Upper middle

Measure	NSI/ PAM	2013/14 Actual	2014/15 Actual	2015/16 Target	2015/16 Actual	Trend between 2014/15 to 2015/16	Welsh Average	All Wales Rank and quartile
						same 1 declined		0 Lower Middle 1 Lower
(LCL/001) The number of visits to Public Libraries during the year, per 1,000 population	NSI	6399	6,002	5489	6,193	↑	5,374	4th Upper
(LCS/002) The number of visits to local authority sport and leisure facilities during the year per 1,000 population where the visitor will be participating in physical activity	NSI	7885	7.348	8642	7,075	↓	8,409	19th Lower
Education						9 Improved or stayed at 100% / 0 1 Stayed the same 1 declined		7 Upper 1 Upper middle 3 Lower Middle 0 Lower
(EDU/16a) Percentage of pupil attendance in primary schools	PAM	94.2	95.6	95.5	95.7	↑	95	3rd Upper
(EDU/16b) Percentage of pupil attendance in secondary schools	PAM	93.3	94.4	94	94.7	↑	93.9	2nd Upper
(EDU/003) The percentage of pupils assessed at the end of Key Stage 2, in schools maintained by the local authority, achieving the Core Subject Indicator, as determined by Teacher Assessment	NSI & PAM	86.4	88.3	88	90.4	↑	88.1	4th Upper

Measure	NSI/ PAM	2013/14 Actual	2014/15 Actual	2015/16 Target	2015/16 Actual	Trend between 2014/15 to 2015/16	Welsh Average	All Wales Rank and quartile
(EDU/002i) The percentage of all pupils (including those in LA care) in any local authority maintained school, aged 15 as at the preceding 31 August that leave compulsory education, training or work based learning without an approved external qualification	NSI	0.0	0.1	0.2	0.1	⇒	0.2	13th Lower Middle
(EDU/002ii) The percentage of pupils in local authority care in any local authority maintained school, aged 15 as at the preceding 31 August who leave compulsory education, training or work based learning without an approved external qualification	NSI & PAM	0.0	0.0	0	0.0	⇒	0.5	1st Upper
(EDU/006ii) The percentage of pupils assessed, in schools maintained by the local authority, receiving a Teacher Assessment in Welsh (first language) at the end of Key Stage 3	NSI	12.7	10.5	13	12.5	↑	17.8	9th Upper Middle
(EDU/011) The average point score for pupils aged 15 at the preceding 31 August, in schools maintained by the local authority	NSI & PAM	510.8	531	540	541.0	↑	538.6	12th Lower Middle
(EDU/015a) The percentage of final statements of special education need issued within 26 weeks (including exceptions)	NSI	91.8	77.1	89	55.0	↓	68.1	16th Lower Middle
(EDU/015b) The percentage of final statements of special education need issued within 26 weeks (excluding exceptions)	NSI	100	100	100	100.0	⇒	94.5	1st Upper
(EDU/017) The percentage of pupils aged 15 at the preceding 31 August, in schools maintained by the local	NSI	58.1	59.6	64	64	↑	58.3	4th Upper

Measure	NSI/ PAM	2013/14 Actual	2014/15 Actual	2015/16 Target	2015/16 Actual	Trend between 2014/15 to 2015/16	Welsh Average	All Wales Rank and quartile
authority who achieved the Level 2 threshold including a GCSE grade A*-C in English or Welsh first language and mathematics								
(EDU/004) The percentage of pupils assessed at the end of Key Stage 3, in schools maintained by the local authority, achieving the Core Subject Indicator, as determined by Teacher Assessment	PAM	83.0	86.5	85	89.3	↑	84.1	4th Upper
Waste Management						2 Improved 0 Stayed the same 0 declined		0 Upper 0 Upper middle 1 Lower Middle 1 Lower
(WMT/004) The percentage of municipal waste collected by local authorities sent to landfill	NSI & PAM	37.56	35.62	-	25.79	↑	18.14	18th Lower
(WMT/009) The percentage of municipal waste collected by local authorities and prepared for reuse and/or recycled, including source segregated biowastes that are composted or treated biologically in another way	NSI & PAM	52.52	52.07	58	59.13	↑	60.19	14th Lower Middle
Street Scene						1 Improved 0 Stayed the same 0 declined 1 N/A		0 Upper 0 Upper middle 0 Lower Middle 1 Lower 1 N/A
(STS/005b) The percentage of highways inspected of a high or acceptable standard of cleanliness	PAM	99.6	97.8	N/A	N/A	N/A	96.5	-
(STS/006) The percentage of reported fly tipping incidents cleared within 5 working days	NSI	91.81	90.09	90	91.56	↑	95.26	19th Lower

Measure	NSI/ PAM	2013/14 Actual	2014/15 Actual	2015/16 Target	2015/16 Actual	Trend between 2014/15 to 2015/16	Welsh Average	All Wales Rank and quartile
Transport and Highways						2 Improved 0 Stayed the same 0 declined		0 Upper 0 Upper middle 0 Lower Middle 2 Lower
(THS/007) The percentage of adults aged 60 or over who hold a concessionary bus pass	NSI	66.1	67.2	67	68.6	↑	85.6	22nd Lower
(THS/012) The percentage of principal (A) roads, non-principal (B) roads and non-principal (C) roads that are in overall poor condition	PAM	20.4	19.7	21.6	19.0	↑	11.2	22nd Lower
Public protection						0 Improved 0 Stayed the same 1 declined		0 Upper 0 Upper middle 0 Lower Middle 1 Lower
(PPN/009) The percentage of food establishments which are 'broadly compliant' with food hygiene standards	PAM	90.28	94.69	-	90.93	↓	94.22	19th Lower
Human Resources						0 Improved 0 Stayed the same 1 declined		0 Upper 0 Upper middle 1 Lower Middle 0 Lower
(CHR/002): The number of working days/shifts per full-time equivalent (FTE) local authority employee lost due to sickness absence	PAM	N/A	7.4	-	10.6	↓	10.2	13th Lower Middle
Energy Management						0 Improved 0 Stayed the same 0 declined 1 N/A		0 Upper 0 Upper middle 1 Lower Middle 0 Lower

Measure	NSI/ PAM	2013/14 Actual	2014/15 Actual	2015/16 Target	2015/16 Actual	Trend between 2014/15 to 2015/16	Welsh Average	All Wales Rank and quartile
CAM/037 The percentage change in the average Display Energy Certificate (DEC) score within local authority public buildings over 1,000 square metres		-	-	-	3	N/A	2.0	12th Lower Middle

** Indicators highlighted in yellow are those 24 specifically mentioned in the Bulletin.*

1.4 In agreeing the Corporate Improvement Plan 2016-19, cabinet agreed that 4 of the national indicator set being co-ordinated by WLGA for 2016/17 did not directly support the priorities of the CIP. These 4 included:

- (CAM/037) The percentage change in average Display Energy Certificate (DEC) score within local authority public buildings over 1,000 square metres (PAM)
- (CHR/002) The number of working days/shifts per full-time equivalent (FTE) local authority employee lost due to sickness absence (PAM)
- (THS/007) The percentage of adults aged 60 or over who hold a concessionary bus pass (NS)
- (LCS/002b) The number of visits to local authority sport and leisure facilities during the year per 1,000 population where the visitor will be participating in physical activity (NS)

2. Useful Links

2.1 The best tools for looking at the Data for the year 2015-16 for the National Strategic and Public Accountability Measures in relation to performance, trends and wales standing are the following;

- Infobase Cymru
<http://www.infobasecymru.net/IAS/themes/communities,equalitiesandlocalgovernment/localauthorityperformance>
- My Local Council
http://www.mylocalcouncil.info/Data.aspx?id=_00NN&lang=en-GB
- Stats Wales - National Strategic Indicators by indicator and year
<https://statswales.wales.gov.uk/Catalogue/Local-Government/National-Strategic-Indicators-of-Local-Authority-Perfomance/nationalstrategicindicators-by-indicator-year>

3. Appendices

3.1 LGDU Local Government Performance Bulletin 2015-16

Recommendation:	Reason for Recommendation:
Recommendation 1: That Strategic Overview Board receive the LGDU Local Government Performance Bulletin 201516 for information.	Supporting good practice and simple governance as required in the Local Government (Wales) Measure 2009.

Relevant Policy (ies):	
Within Policy:	Y
Within Budget:	Y
Relevant Local	

Member(s):			
Person(s) To Implement Decision:			
Date By When Decision To Be Implemented:			
Contact Officer Name:	Tel:	Fax:	Email:
Garry Hudson	01597 826109		garry.hudson@powys.gov.uk